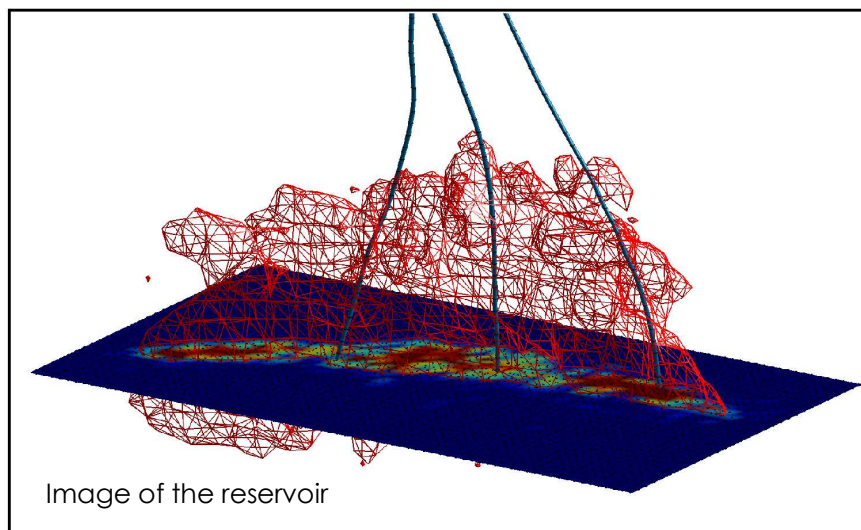


## Seismic risk analysis for the geothermal system at Soutz-sous-Forêts (France)

On behalf of LIAG (Leibnitz Institute for Applied Geophysics), Q-con successfully completed a comprehensive study of the seismic risk associated with the operation of the geothermal reservoir at Soutz-sous-Forêts.



More than 114,000 microearthquakes were processed for developing a state-of-the-art reservoir model. Numerical finite-element simulations were utilized for testing the impact on the induced seismicity for different reservoir operation strategies. Besides a new level of understanding of the physical processes, the study provides important guidelines for operating a geothermal system at minimum seismic risk.